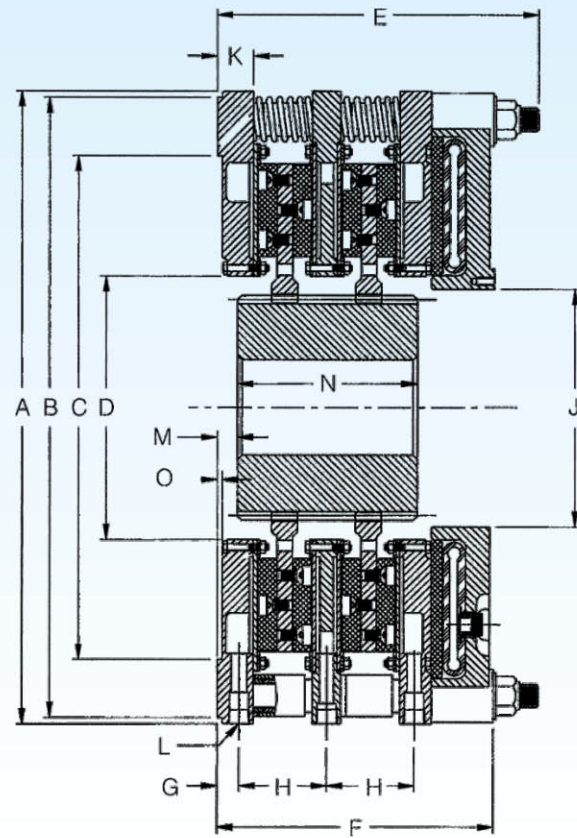


1 水冷式制动器

Water Cooled Brakes



WCB规格参数 WCB Specifications

型号 Size	额定扭矩 Torque Ratings @100 psi (lb-in)/7 bar (Nm)								气体容积/结合时 Air Volume/Engagement				最高 滑动 转速 Max Slip Speed	最高 空载 转速 Max Dis- engaged Speed	重量和转动惯量 WEIGHT AND INERTIA			型号 Size
	标准 Friction Material		高摩擦系数 High Coeff Friction Material		散热能力 Heat Diss ipation Capacity		水流量 (最小值) Water Flow (Minimum)		新 New		旧 Worm				总重量 Total Weight	齿毂和驱动 盘重量 Hub & DP Weight	齿毂和驱动 盘转动惯量 Hub & DP Inertia	
	lb-in	Nm	lb-in	Nm	Hp	Kw	gpm	L/min	in³	L	in³	L						
118	44900	5150	67100	7700	120	89.5	12	45.4	59	1.0	122	2	850	1560	331(150)	86(39)	18.8(0.79)	118
218	89800	10310	134200	15400	240	179	24	90.8	69	1.1	122	2	850	1560	460(209)	172(78)	38.1(1.61)	218
318	134700	15460	201300	23100	360	268.5	36	136.3	78	1.3	122	2	850	1560	848(385)	272(123)	57.4(2.42)	318
418	179600	20620	268400	30810	480	357.9	48	181.7	88	1.4	122	2	850	1560	1236(561)	372(169)	78.1(3.29)	418
124	111600	12800	166700	19130	270	201.3	27	102.2	170	2.8	299	4.9	640	1170	810(367)	196(89)	71.9(3.03)	124
224	223200	25600	333400	38260	540	402.7	54	204.4	190	3.1	299	4.9	640	1170	1208(548)	428(194)	148(6.21)	224
324	334800	38400	500100	57380	810	604	81	306.6	209	3.4	299	4.9	640	1170	1624(737)	631(286)	219(9.21)	324
424	446400	51200	666700	76510	1080	805.4	108	408.8	228	3.7	299	4.9	640	1170	1950(884)	850(386)	294(12.4)	424
136	375500	43080	561200	64380	650	484.7	65	246.1	271	4.4	661	10.8	425	775	2687(1219)	474(215)	374(15.8)	136
236	751000	86160	1122400	128750	1300	969.4	130	492.1	313	5.1	661	10.8	425	775	3919(1777)	908(412)	704(29.7)	236
336	1126500	129250	1683600	193130	1950	1454	195	738.2	355	5.8	661	10.8	425	775	5400(2449)	1345(610)	1107(46.6)	336
436	1502000	172330	2244800	257500	2600	1939	260	984.2	396	6.5	661	10.8	425	775	6501(2948)	1997(906)	1524(64.2)	436

额定扭矩由气压决定，且制动扭矩的大小与气压成正比。
Torque rating is dependent on air pressure applied. Brake torque is directly proportional to the air pressure applied.
Maximum allowable air pressure is 130 psi(9 bar)

WCB尺寸数据 WCB Dimensions Inches (mm)

型号 Size	A	B		C	D	E	F	G	H	J	K	冷却液入口/出口 L COOLANT INLETS/OUTLETS		M	N	O	P进气口 AIR INLETS			Q	R			安装孔S			齿毂内孔范围 BORE RANGE	型号 Size
		数量 QTY	螺纹规格 SIZE (NPT)									数量 QTY	螺纹规格 SIZE (NPT)				分布圆直径 HOLE CENTER	数量 QTY	型号SIZE (NPT)		圆直径 BOLT CIRCLE	数量 QTY²	型号 SIZE	分布圆直径 BOLT CIRCLE	最小 MIN	最大 MAX³		
118	23 5/8 (600.1)	23.250(590.55)	18.250(463.55)	11(279.4)	9 47/64(247.3)	7 1/4 (184.2)	7/8 (22.2)	3 7/32(81.8)	8 1/2(215.9)	1 1/2(38.1)	4	1/2-14	1 1/4 (31.8)	2 13/16(71.4)	1/4 (6.4)	2	1/2-14	14.188 (360.36)	25°	3	3/8-16	9.125(231.78)	10	21/32 (16.7)	22.000 (558.8)	2 1/4 (57.2)	5 11/32(135.7)	118
218	23 5/8(600.1)	23.250(590.55)	18.250(463.55)	11(279.4)	13 5/32(334.2)	10 19/32(269.1)	7/8 (22.2)	3 7/32(81.8)	8 1/2(215.9)	1 1/2(38.1)	8	1/2-14	1 1/4 (31.8)	5 5/8(142.9)	1/4 (6.4)	2	1/2-14	14.188 (360.36)	25°	3	3/8-16	9.125(231.78)	10	21/32(16.7)	22.000(558.8)	2 1/4 (57.2)	5 11/32 (135.7)	218
318	23 5/8(600.1)	23.250(590.55)	18.250(463.55)	11(279.4)	17 1/4(438.2)	13 15/16 (354.0)	7/8 (22.2)	3 7/32(81.8)	8 1/2(215.9)	1 1/2(38.1)	12	1/2-14	1 1/4 (31.8)	9 5/8(244.5)	1/4 (6.4)	2	1/2-14	14.188 (360.36)	25°	3	3/8-16	9.125(231.78)	10	21/32 (16.7)	22.000(558.8)	2 1/4 (57.2)	5 11/32 (135.7)	318
418	23 5/8(600.1)	23.250(590.55)	18.250(463.55)	11(279.4)	21 1/2(546.1)	17 9/32(438.9)	7/8 (22.2)	3 7/32(81.8)	8 1/2(215.9)	1 1/2(38.1)	16	1/2-14	1 1/4 (31.8)	12 1/2(317.5)	1/4(6.4)	2	1/2-14	14.188 (360.36)	25°	3	3/8-16	9.125(231.78)	10	21/32(16.7)	22.000 (558.8)	2 1/4(57.2)	5 11/32 (135.7)	418
124	30 5/8(777.9)	29.998(761.95)	24.375(619.13)	12 3/4(323.9)	11(279.4)	9 17/64 (235.3)	1 1/16 (27.0)	4 1/8(104.8)	11 1/2(292.1)	1 3/4(44.5)	4	3/4-14	1 3/8 (34.9)	3 1/2(88.9)	1/4(6.4)	2	1/2-14	18.500 (469.90)	24°	6	3/8-16	12.250(311.15)	10	21/32 (16.7)	28.750(730.25)	2 3/4(69.9)	7 (177.8)	124
224	30 5/8(777.9)	29.998(761.95)	24.375(619.13)	12 3/4(323.9)	15 1/2(393.7)	13 5/16 (338.1)	1 1/16 (27.0)	4 1/8(104.8)	11 1/2(292.1)	1 3/4(44.5)	8	3/4-14	1 3/8 (34.9)	8 5/8(219.1)	1/4 (6.4)	2	1/2-14	18.500 (469.90)	24°	6	3/8-16	12.250(311.15)	10	21/32(16.7)	28.750(730.25)	2 3/4(69.9)	7 (177.8)	224
324	30 5/8(777.9)	29.998(761.95)	24.375(619.13)	12 3/4(323.9)	24(609.6)	17 11/32(440.5)	1 1/16 (27.0)	4 1/8(104.8)	11 1/2(292.1)	1 3/4(44.5)	12	3/4-14	1 3/8 (34.9)	13 3/16(335.0)	1/4(6.4)	2	1/2-14	18.500 (469.90)	24°	6	3/8-16	12.250 (311.15)	10	21/32 (16.7)	28.750(730.25)	2 3/4(69.9)	7 (177.8)	324
424	30 5/8(777.9)	29.998(761.95)	24.375(619.13)	12 3/4(323.9)	30 1/2(774.7)	21 7/16 (544.5)	1 1/16 (27.0)	4 1/8(104.8)	11 1/2(292.1)	1 3/4(44.5)	16	3/4-14	1 3/8 (34.9)	16 15/16(430.2)	1/4(6.4)	2	1/2-14	18.500 (469.90)	24°	6	3/8-16	12.250(311.15)	10	21/32(16.7)	28.750(730.25)	2 3/4(69.9)	7 (177.8)	424
136	44 55/64(1139.4)	44.498(1130.25)	18.375(466.73)	16 1/2(419.1)	17(431.8)	12 1/16 (306.4)	1 17/32 (38.9)	4 31/32(126.2)	16 1/2(419.1)	2 19/32(65.9)	4	1-1/4-11 1/2	2 3/8 (60.3)	5(127.0)	9/32(7.1)	3	1/2-14	28.000(711.20)	18.75°	6	1/2-13	17.500(444.50)	14	1 1/16 (27.0)	42.000(1066.80)	4 (101.6)	10 1/8(257.2)	136
236	44 55/64(1139.4)	44.498(1130.25)	18.375(466.73)	16 1/2(419.1)	20 3/4(527.1)	17 1/32(432.6)	1 17/32 (38.9)	4 31/32(126.2)	16 1/2(419.1)	2 19/32(65.9)	8	1-1/4-11 1/2	2 3/8(60.3)	9(228.6)	9/32 (7.1)	3	1/2-14	28.000 (711.20)	18.75°	6	1/2-13	17.500 (444.50)	14	1 1/16(27.0)	42.000(1066.80)	4 (101.6)	10 1/8(257.2)	236
336	44 55/64(1139.4)	44.498(1130.25)	18.375(466.73)	16 1/2(419.1)	27 1/2(698.5)	22 (558.8)	1 17/32 (38.9)	4 31/32(126.2)	16 1/2(419.1)	2 19/32(65.9)	12	1-1/4-11 1/2	2 3/8 (60.3)	13(330.2)	9/32(7.1)	3	1/2-14	28.000 (711.20)	18.75°	6	1/2-13	17.500(444.50)	14	1 1/16 (27.0)	42.000 (1066.80)	4 (101.6)	10 1/8(257.2)	336
436	44 55/64(1139.4)	44.498(1130.25)	18.375(466.73)	16 1/2(419.1)	35(889.0)	26 31/32 (685.0)	1 17/32 (38.9)	4 31/32(126.2)	16 1/2(419.1)	2 19/32(65.9)	16	1-1/4-11 1/2	2 3/8(60.3)	18(457.2)	9/32(7.1)	3	1/2-14	28.000 (711.20)	18.75°	6	1/2-13	17.500(444.50)	14	1 1/16 (27.0)	42.000(1066.80)	4 (101.6)	10 1/8 (257.2)	436