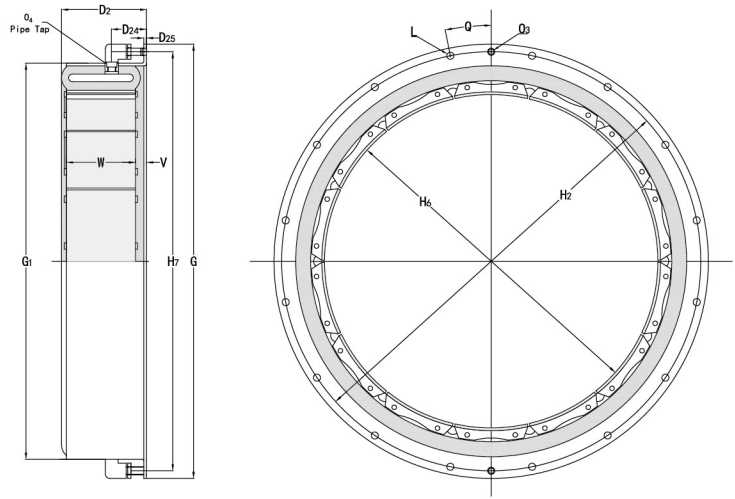
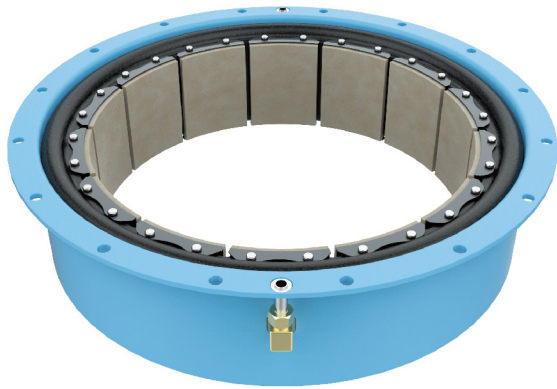


Single Flange CB Clutch



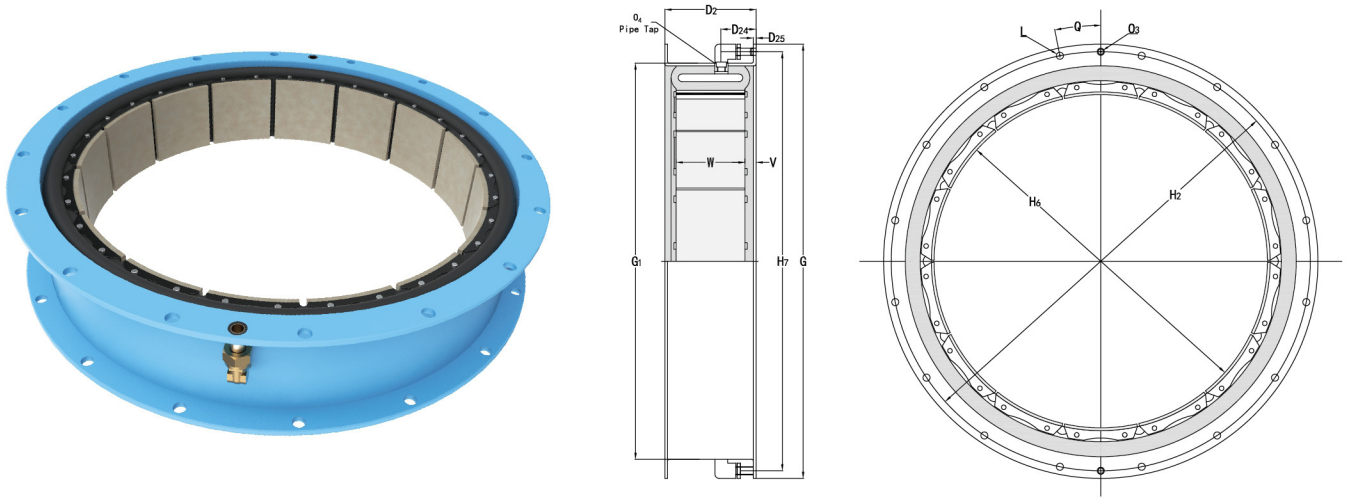
Dimensions Data

| Size | Torque Rating | D ₂ | D ₂₄ | D ₂₅ | G | G ₁ | H ₂ | H ₆ | H ₇ | L (Bolt) | | O ₃ | O ₄ | Deg | V | W | |
|---------|---------------|---------------------------|-----------------|-----------------|-------|----------------|----------------|----------------|----------------|------------|------|----------------|----------------|--------|----|-----|-------|
| | | | | | | | | | | No. | Size | | | | | No. | Width |
| 3CB150 | 40.7 | 55 | 30 | 2 | 160.0 | 123 | 146.0 | 80 | 146 | 8 | 6 | 7 | 1/8-27 | 22.500 | 9 | 6 | 38 |
| 4CB200 | 113 | 67 | 35 | 2 | 184.1 | 148 | 169.9 | 105 | 170 | 8 | 6 | 5 | 1/8-27 | 22.500 | 10 | 6 | 51 |
| 5CB200 | 165 | 72 | 38 | 2 | 224.0 | 183 | 205.0 | 131 | 205 | 8 | 8 | 7 | 1/8-27 | 22.500 | 12 | 6 | 51 |
| 6CB200 | 231 | 75 | 40 | 2 | 273.1 | 230 | 254.0 | 156 | 254 | 8 | 10 | 8 | 3/8-18 | 22.500 | 14 | 6 | 51 |
| 8CB250 | 485 | 87 | 48 | 2 | 327.0 | 284 | 308.0 | 207 | 308 | 8 | 10 | 8 | 3/8-18 | 22.500 | 14 | 8 | 64 |
| 10CB300 | 921 | 105 | 51 | 5 | 390.5 | 346 | 371.5 | 257 | 371 | 12 | 10 | 8 | 3/8-18 | 15.000 | 17 | 10 | 76 |
| 12CB350 | 1500 | 120 | 51 | 5 | 447.7 | 403 | 428.6 | 308 | 429 | 14 | 10 | 8 | 3/8-18 | 12.857 | 17 | 12 | 89 |
| 14CB400 | 2230 | 133 | 51 | 5 | 498.5 | 454 | 479.4 | 359 | 479 | 16 | 10 | 8 | 3/8-18 | 11.250 | 17 | 14 | 102 |
| SI | N · m | Dimensions in millimeters | | | | | | | | | | | | | | | |
| | @ 5.2bar | | | | | | | | | | | | | | | | |

Technical Parameter

| Size | Torque Rating | Maximum Speed | Centrifugal Loss Constant | Moment of Inertia | Weight | Friction Area | Friction Lining Thickness | | Air Tube Cavity | Minimum Drum Diameter |
|---------|---------------|---------------|---------------------------|---------------------|--------|-----------------|---------------------------|------|-----------------|-----------------------|
| | | | | | | | New | Worn | | |
| 3CB150 | 40.7 | 2000 | 0.10 E-06 | 0.00 | 0.8 | 90.3 | 5 | 1 | 0.12 | 74 |
| 4CB200 | 113 | 2000 | 0.12 E-06 | 0.01 | 1.1 | 148.4 | 3 | 1 | 0.17 | 99 |
| 5CB200 | 165 | 2000 | 0.14 E-06 | 0.02 | 1.6 | 193.5 | 5 | 1 | 0.28 | 124 |
| 6CB200 | 231 | 1800 | 0.41 E-06 | 0.04 | 3.2 | 232.2 | 4 | 2 | 0.32 | 150 |
| 8CB250 | 485 | 1800 | 0.48 E-06 | 0.08 | 4.1 | 393.5 | 3 | 2 | 0.49 | 201 |
| 10CB300 | 921 | 1800 | 0.69 E-06 | 0.25 | 8.6 | 587.0 | 5 | 2 | 0.82 | 251 |
| 12CB350 | 1500 | 1800 | 0.83 E-06 | 0.46 | 12 | 825.6 | 5 | 2 | 1.31 | 302 |
| 14CB400 | 2230 | 1800 | 1.04 E-06 | 0.71 | 14 | 1096.5 | 5 | 2 | 1.15 | 353 |
| SI | N · m | rpm | bar/rpm ² | kg · m ² | kg | cm ² | mm | | dm ³ | mm |
| | @ 5.2bar | | | | | | | | | |

Dual Flange CB Clutch



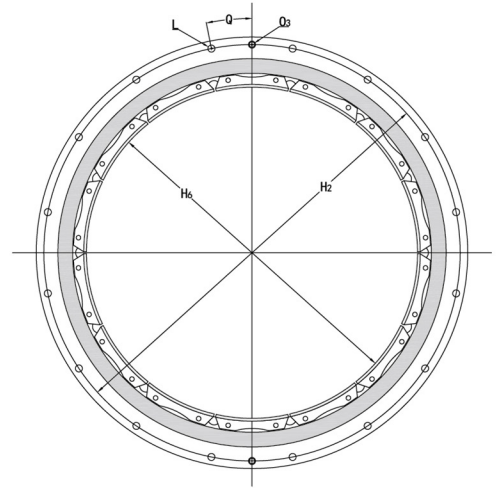
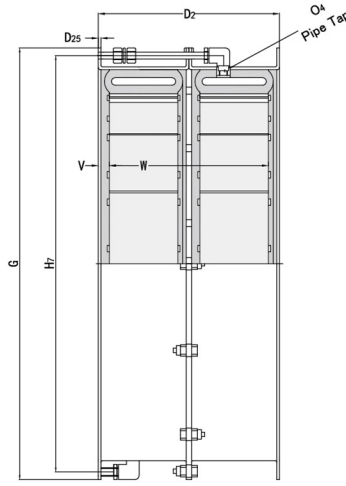
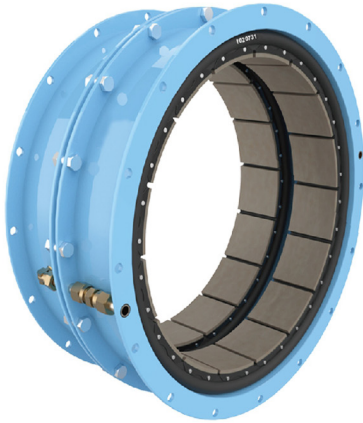
Dimensions Data

| Size | Torque Rating | D ₂ | D ₂₄ | D ₂₅ | G | G ₁ | H ₂ | H ₆ | H ₇ | L (Bolt) | | O ₃ | O ₄ | Q | V | W | |
|---------|------------------|---------------------------|-----------------|-----------------|--------|----------------|----------------|----------------|----------------|------------|------|----------------|----------------|--------|----|-----|-------|
| | | | | | | | | | | No. | Size | | | | | No. | Width |
| 12CB350 | 1500 | 124 | 51 | 5 | 447.7 | 403 | 428.6 | 308 | 429 | 14 | 10 | 8 | 3/8-18 | 12.857 | 17 | 12 | 89 |
| 14CB400 | 2230 | 137 | 51 | 5 | 498.5 | 454 | 479.4 | 359 | 479 | 16 | 10 | 8 | 3/8-18 | 11.250 | 17 | 14 | 102 |
| 16CB500 | 3980 | 168 | 64 | 5 | 596.9 | 527 | 571.5 | 411 | 565 | 8 | 13 | 10 | 3/8-18 | 22.500 | 21 | 10 | 127 |
| 18CB500 | 4970 | 168 | 64 | 5 | 647.7 | 578 | 619.1 | 462 | 619 | 12 | 13 | 10 | 3/8-18 | 15.000 | 21 | 11 | 127 |
| 20CB500 | 6060 | 168 | 64 | 5 | 698.5 | 629 | 669.9 | 513 | 670 | 12 | 13 | 10 | 3/8-18 | 15.000 | 21 | 12 | 127 |
| 22CB500 | 7040 | 168 | 64 | 5 | 749.3 | 679 | 720.7 | 564 | 721 | 12 | 13 | 10 | 3/8-18 | 15.000 | 21 | 13 | 127 |
| 24CB500 | 8480 | 168 | 64 | 5 | 800.1 | 730 | 771.5 | 614 | 772 | 16 | 13 | 10 | 3/8-18 | 11.250 | 21 | 14 | 127 |
| 26CB525 | 10400 | 176 | 64 | 6 | 863.6 | 787 | 831.9 | 665 | 826 | 16 | 16 | 13 | 1/2-14 | 11.250 | 21 | 16 | 133 |
| 28CB525 | 12000 | 176 | 64 | 6 | 914.4 | 838 | 882.7 | 716 | 876 | 16 | 16 | 13 | 1/2-14 | 11.250 | 21 | 17 | 133 |
| 30CB525 | 13700 | 176 | 64 | 6 | 965.2 | 889 | 933.5 | 767 | 927 | 16 | 16 | 13 | 1/2-14 | 11.250 | 21 | 18 | 133 |
| 32CB525 | 15500 | 176 | 64 | 6 | 1016.0 | 940 | 984.3 | 818 | 978 | 18 | 16 | 13 | 1/2-14 | 10.000 | 21 | 19 | 133 |
| 36CB525 | 19400 | 176 | 70 | 7 | 1133.5 | 1056 | 1095.4 | 919 | 1099 | 18 | 19 | 16 | 3/4-14 | 10.000 | 21 | 22 | 133 |
| 40CB525 | 23800 | 176 | 70 | 7 | 1235.1 | 1157 | 1197 | 1021 | 1200 | 20 | 19 | 16 | 3/4-14 | 9.000 | 21 | 24 | 133 |
| 45CB525 | 29400 | 176 | 70 | 7 | 1362.1 | 1287 | 1324 | 1148 | 1327 | 24 | 19 | 16 | 3/4-14 | 7.500 | 21 | 27 | 133 |
| SI | N · m @5.2bar | Dimensions in millimeters | | | | | | | | | | | | | | | |

Technical Parameter

| Size | Torque Rating | Maximum Speed | Centrifugal Loss Constant | Moment of Inertia | Weight | Friction Area | Friction Lining Thickness | | Air Tube Cavity | Minimum Drum Diameter |
|---------|------------------|---------------|---------------------------|-------------------|--------|-----------------|---------------------------|------|-----------------|-----------------------|
| | | | | | | | New | Worn | | |
| 12CB350 | 1470 | 1800 | 0.83 E-06 | 0.50 | 14 | 826 | 5 | 2 | 1.31 | 302 |
| 14CB400 | 2230 | 1800 | 1.04 E-06 | 0.88 | 16 | 1097 | 5 | 2 | 1.15 | 353 |
| 16CB500 | 3980 | 1550 | 1.38 E-06 | 2.18 | 34 | 1554 | 7 | 2 | 2.30 | 403 |
| 18CB500 | 4970 | 1400 | 1.59 E-06 | 2.94 | 37 | 1690 | 7 | 2 | 2.62 | 454 |
| 20CB500 | 6060 | 1300 | 1.73 E-06 | 3.78 | 40 | 1858 | 7 | 2 | 2.79 | 505 |
| 22CB500 | 7040 | 1250 | 1.93 E-06 | 4.79 | 43 | 2012 | 7 | 2 | 3.12 | 555 |
| 24CB500 | 8480 | 1200 | 2.07 E-06 | 5.96 | 46 | 2180 | 7 | 2 | 3.28 | 606 |
| 26CB525 | 10400 | 1100 | 2.35 E-06 | 8.82 | 60 | 2606 | 8 | 2 | 4.26 | 656 |
| 28CB525 | 12000 | 1000 | 2.55 E-06 | 10.58 | 63 | 2774 | 8 | 2 | 4.59 | 706 |
| 30CB525 | 13700 | 950 | 2.76 E-06 | 12.73 | 67 | 2954 | 8 | 2 | 4.76 | 757 |
| 32CB525 | 15500 | 900 | 2.97 E-06 | 15.08 | 71 | 3115 | 8 | 2 | 5.08 | 808 |
| 36CB525 | 19400 | 800 | 3.31 E-06 | 21.42 | 81 | 3548 | 8 | 2 | 5.74 | 910 |
| 40CB525 | 23800 | 750 | 3.59 E-06 | 30.66 | 91 | 3935 | 8 | 2 | 6.23 | 1011 |
| 45CB525 | 29400 | 670 | 4.42 E-06 | 46.83 | 119 | 4354 | 8 | 2 | 7.05 | 1137 |
| SI | N · m @5.2bar | rpm | bar/rpm ² | kg.m ² | kg | cm ² | mm | | dm ³ | mm |

Dual CB Clutch



Dimensions Data

| Size | Torque Rating | D ₂ | D ₂₅ | G | H ₂ | H ₆ | H ₇ | L (Bolt) | | O ₃ | O ₄ | Deg | V | W | |
|---------|-------------------|---------------------------|-----------------|--------|----------------|----------------|----------------|------------|------|----------------|----------------|--------|----|-----|-------|
| | | | | | | | | No. | Size | | | | | No. | Width |
| 12CB350 | 3010 | 257 | 5 | 447.7 | 428.6 | 308 | 429 | 14 | 10 | 8 | 3/8 -18 | 12.857 | 17 | 24 | 222 |
| 14CB400 | 4450 | 283 | 5 | 498.5 | 479.4 | 359 | 479 | 16 | 10 | 8 | 3/8 -18 | 11.250 | 17 | 28 | 248 |
| 16CB500 | 7960 | 346 | 5 | 596.9 | 571.5 | 411 | 565 | 8 | 13 | 10 | 3/8 -18 | 22.500 | 21 | 20 | 305 |
| 18CB500 | 9940 | 346 | 5 | 647.7 | 619.1 | 462 | 619 | 12 | 13 | 10 | 3/8 -18 | 15.000 | 21 | 22 | 305 |
| 20CB500 | 12100 | 346 | 5 | 698.5 | 669.9 | 513 | 670 | 12 | 13 | 10 | 3/8 -18 | 15.000 | 21 | 24 | 305 |
| 22CB500 | 14100 | 346 | 5 | 749.3 | 720.7 | 564 | 721 | 12 | 13 | 10 | 3/8 -18 | 15.000 | 21 | 26 | 305 |
| 24CB500 | 17000 | 346 | 5 | 800.1 | 771.5 | 614 | 772 | 16 | 13 | 10 | 3/8 -18 | 11.300 | 21 | 28 | 305 |
| 26CB525 | 20900 | 362 | 6 | 863.6 | 831.9 | 665 | 826 | 16 | 16 | 13 | 1/2 -14 | 11.300 | 21 | 32 | 319 |
| 28CB525 | 24000 | 367 | 6 | 914.4 | 882.7 | 716 | 876 | 16 | 16 | 13 | 1/2 -14 | 11.300 | 21 | 34 | 322 |
| 30CB525 | 27300 | 367 | 6 | 965.2 | 933.5 | 767 | 927 | 16 | 16 | 13 | 1/2 -14 | 11.300 | 21 | 36 | 322 |
| 32CB525 | 31000 | 367 | 6 | 1016.0 | 984.3 | 818 | 978 | 18 | 16 | 13 | 1/2 -14 | 10.000 | 21 | 38 | 322 |
| 36CB525 | 38900 | 367 | 6 | 1133.5 | 1095.4 | 919 | 1099 | 18 | 19 | 16 | 3/4 -14 | 10.000 | 21 | 44 | 322 |
| 40CB525 | 47700 | 367 | 6 | 1235.1 | 1197.0 | 1021 | 1200 | 20 | 19 | 16 | 3/4 -14 | 9.000 | 21 | 48 | 322 |
| 45CB525 | 58800 | 367 | 7 | 1362.1 | 1324.0 | 1148 | 1327 | 24 | 19 | 16 | 3/4 -14 | 7.500 | 21 | 54 | 322 |
| SI | N · m @ 5.2bar | Dimensions in millimeters | | | | | | | | | | | | | |

Technical Parameter

| Size | Torque Rating | Maximum Speed | Centrifugal Loss Constant | Moment of Inertia | Weight | Friction Area | Friction Lining Thickness | | Air Tube Cavity | Minimum Drum Diameter |
|---------|-------------------|---------------|---------------------------|---------------------|--------|-----------------|---------------------------|------|-----------------|-----------------------|
| | | | | | | | New | Worn | | |
| 12CB350 | 3010 | 1800 | 0.83E-06 | 1.05 | 28 | 1651 | 5 | 2 | 2.62 | 302 |
| 14CB400 | 4450 | 1800 | 1.04E-06 | 1.76 | 34 | 2193 | 5 | 2 | 2.3 | 353 |
| 16CB500 | 7960 | 1550 | 1.38E-06 | 4.45 | 68 | 3109 | 7 | 2 | 4.59 | 403 |
| 18CB500 | 9940 | 1400 | 1.59E-06 | 6.05 | 75 | 3380 | 7 | 2 | 5.25 | 454 |
| 20CB500 | 12100 | 1300 | 1.73E-06 | 7.77 | 82 | 3715 | 7 | 2 | 5.58 | 505 |
| 22CB500 | 14100 | 1250 | 1.93E-06 | 9.79 | 88 | 4025 | 7 | 2 | 6.23 | 555 |
| 24CB500 | 17000 | 1200 | 2.07E-06 | 12.26 | 95 | 4360 | 7 | 2 | 6.56 | 606 |
| 26CB525 | 20900 | 1050 | 2.35E-06 | 18.14 | 123 | 5212 | 8 | 2 | 8.53 | 656 |
| 28CB525 | 24000 | 1000 | 2.55E-06 | 21.71 | 130 | 5547 | 8 | 2 | 9.18 | 706 |
| 30CB525 | 27300 | 950 | 2.76E-06 | 26.08 | 137 | 5908 | 8 | 2 | 9.51 | 757 |
| 32CB525 | 31000 | 900 | 2.97E-06 | 30.91 | 145 | 6231 | 8 | 2 | 10.2 | 808 |
| 36CB525 | 38900 | 800 | 3.31E-06 | 44.18 | 166 | 7095 | 8 | 2 | 11.5 | 910 |
| 40CB525 | 47700 | 750 | 3.59E-06 | 63.08 | 187 | 7869 | 8 | 2 | 12.5 | 1011 |
| 45CB525 | 58800 | 670 | 4.42E-06 | 96.31 | 243 | 8708 | 8 | 2 | 14.1 | 1137 |
| SI | N · m @ 5.2bar | rpm | bar/rpm ² | kg · m ² | kg | cm ² | mm | | dm ³ | mm |